

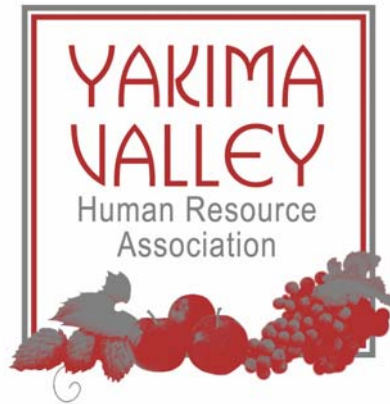
Vol. 9, Issue 5

August 2008



## YAKIMA VALLEY HUMAN RESOURCE ASSOCIATION

# YVHRA NEWS



AFFILIATE OF  
**SHRM**<sup>TM</sup>  
SOCIETY FOR HUMAN  
RESOURCE MANAGEMENT

### Inside This Issue

- From the President . . . 2**
- NHRMA Conference . . 3**
- SHRM Foundation . . . 5**
- Future Programs . . . . 6**

## September Membership Luncheon

**WEDNESDAY, SEPTEMBER 24, 2008**

**11:45 a.m. at the Clarion Vineyards Room**

## EMPLOYMENT LAW UPDATE

### Featuring Kirk Ehlis

Kirk Ehlis is a partner with Menke Jackson Beyer Eloffson & Ehlis, LLP, in Yakima. Kirk graduated from Willamette University College of Law in Salem, Oregon in 1993. He is a member of the Yakima County Bar Association, Washington State Bar Association, American Bar Association and Washington Defense Trial Lawyer Association. He has extensive experience in trial and arbitration and has drafted hundreds of trial briefs, discovery requests and summary judgment memorandums in the insurance defense, medical malpractice defense and employment discrimination defense field.

Kirk was born in Yakima and is married with two young daughters. He enjoys running marathons, outdoor activities and travel.

Kirk will be giving an update on both federal and state legislation that has occurred over the past year.

**CEU's for PHR/SPHR are applied for.**

## President's Message

Dear YVHRA Members:

What's happening at YVHRA? A lot!!

The Northwest Human Resource Association (NHRMA) Conference is next month. *(See info in this letter.)* We hope to see you there. We do have volunteer opportunities at the conference, even for those of you who are not registered. Please contact me for more information at: [www.president@yvhra.org](mailto:www.president@yvhra.org).

Just a reminder: there were no membership meetings this summer. We were going to have a social at the NHRMA Conference, however we were unable to find a location and time that would make that an effective meeting for everyone. We'll be meeting next in September here in Yakima. *(See details on the September meeting in this newsletter.)*

The Board recently voted to send this newsletter out quarterly instead of monthly. However, current information will be posted on our website at [www.yvhra.org](http://www.yvhra.org).

We always have volunteer opportunities within the chapter with varying levels of responsibility. We are currently looking for HR professionals to fill open positions on the YVHRA Board for 2009. Please contact me if you are interested in being more involved in the chapter!

Enjoy the rest of your summer!

Karla Doncaster  
YVHRA 2008 President



# Northwest Human Resource Management Association **CONFERENCE**



**Tuesday, September 16 - Thursday, September 18**

**Three Rivers Convention Center  
Kennewick, Washington**

[www.nhrmaconference.org](http://www.nhrmaconference.org)

***Register by 8/29 for the standard registration fee of \$499.  
Registrations after 8/29 will be \$599.***

## JOIN YOUR YVHRA BOARD OF DIRECTORS....

We are looking for a few good people! The 2009 Board has the following openings:

### **Workforce Readiness/College Liaison Chair Program/Professional Development Chair**

If you are interested in volunteering and would like more information on any of these positions, please contact:

Karla Doncaster at [www.president@yvhra.org](mailto:www.president@yvhra.org)

Marla Arbuckle at [www.presidentelect@yvhra.org](mailto:www.presidentelect@yvhra.org)

The YVHRA Board of Directors meets once per month. As a board member you are eligible for HRCI credits, great networking opportunities and the most up-to-date information for your job. Plus, YVHRA Board is FUN! Come join us!

Thank you.

## NOVEMBER MEMBERSHIP LUNCHEON

WEDNESDAY, NOVEMBER 19, 2008

11:45 A.M. AT THE CLARION

### **C.O.H.E. – CENTER FOR OCCUPATIONAL HEALTH EDUCATION**

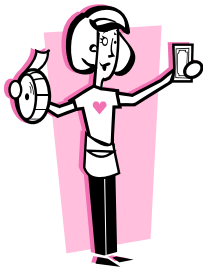
After three years, COHE has exciting news to share! The COHE project has directly resulted in major reductions to employee time away from work due to workplace injuries and has influenced significant improvements in communication and documentation from health care providers to employers. Becoming a COHE employer means that your company receives enhanced services on L&I claims. The COHE project is sponsored by St. Luke's Rehabilitation Institute in Spokane and is administered through the Department of Labor & Industries.

Dr. Hansen and Pamela Cromer from COHE will be joined by Ron Langley, Small Business Liaison to L&I, for a discussion of industrial insurance and disability management initiatives available to employers doing business in this region of the state.



[www.ewacohe.org](http://www.ewacohe.org)

<http://www.Ini.wa.gov/ClaimsIns/Providers/Research/OHS/default.asp>



## Feeling Lucky?

In an effort to support the SHRM Foundation, and to give our members a chance at winning a little green, we will be holding a 50/50 raffle at the September 24 General Membership Meeting. Tickets are \$1.00 each or 6 for \$5.00! One winning ticket will be drawn prior to the close of the meeting.



Bring your dollars and loose change, and take a chance at winning 50% of the total pot! The other 50% will be sent to the SHRM Foundation. (Sorry, no checks, credit cards, green stamps, or IOU's accepted.)

**SHRM Foundation** [www.shrm.org/foundation](http://www.shrm.org/foundation)

### **What does the SHRM Foundation do? How is it different from SHRM?**

The Foundation sponsors empirical academic research, publications and education to advance the HR profession. Programs sponsored in whole or in part by the SHRM Foundation include: the Masters Series, the SHRM Foundation Scholarships and Dissertation Awards and the Michael R. Losey Research Award.

The Foundation also produces the Effective Practice Guidelines series, a series of educational DVDs and the online directories of Graduate Programs in Human Resource Management and Undergraduate Programs in HR Management. The Foundation is affiliated with SHRM, but it is a legally separate 501(c)3 organization that is funded by tax-deductible donations. For more details, visit [www.shrm.org/foundation](http://www.shrm.org/foundation).

### **SHRM Foundation Scholarship Program**

The SHRM Foundation sponsors two major scholarship programs. The Regional Scholarship program for working HR professionals is underwritten by the J. J. Keller Foundation. This program will award a total of \$100,000 for scholarships to be awarded to national SHRM members pursuing a degree in human resources or SPHR, GPHR, PHR or California certification [in 2007, 100 scholarships were awarded in various nominations]. In addition, chapters and state councils are eligible to compete for a scholarship to fund programs that promote certification.

---

***Do you have a new job, title or personal information?***

***If you do, please notify membership at YVHRA so we can keep your information up-to-date to enable you to continue to received information on the chapter's activities.***

**Mark your calendars now so you don't miss these great programs we have lined up for you.**



## YVHRA Upcoming Meetings Agenda

**September 24**

**Legal Update**

Learn up-to-date information on legislative and case law and how it affects you. Presented by a local attorney. *(More on page 1.)*

**October 29**

**CWU Student Games**

Compete with Central's top HR students in a round of "Who Wants To Be An HR Manager?"

**November 19**

**COHE: Center for Occupational Health Education**

Learn how your company can reduced their L&I claims through the COHE project. Special speakers from COHE and L&I will present this program.

**December 7**

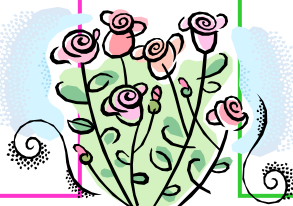
**Installation Dinner**

## Congratulations

to YVHRA President Karla Doncaster and her husband Kelsey on the birth of their daughter, Millicent Rose on April 29.

&

to YVHRA Programs Chair Carrie Wallbaum on her marriage to Marc Gabbard on May 17.



## YVHRA BOARD OF DIRECTORS

### President

Karla Doncaster  
Yakima Valley Credit Union  
[www.president@yvhra.org](mailto:www.president@yvhra.org)

### President-Elect

Marla Arbuckle  
Poppoff Concrete, Inc.  
[www.presidentelect@yvhra.com](mailto:www.presidentelect@yvhra.com)

### Past President

Robin Scott  
Yakima Nation Housing  
[www.pastpresident@yvhra.org](mailto:www.pastpresident@yvhra.org)

### VP Finance

Margaret Smart  
Dolsen Companies  
[www.finance@yvhra.org](mailto:www.finance@yvhra.org)

### Finance Co-Chair

Kathy Rheume  
FCG Benefits  
[www.finance@yvhra.org](mailto:www.finance@yvhra.org)

### VP Membership

Linda Lantis  
John I. Haas  
[www.membership@yvhra.org](mailto:www.membership@yvhra.org)

### Secretary

Janna Diaz  
Tree Top  
[www.secretary@yvhra.org](mailto:www.secretary@yvhra.org)

### Programs Chair

Carrie Gabbard  
Yakima Public Library  
[www.programs@yvhra.org](mailto:www.programs@yvhra.org)

### Diversity & Foundation Chair

Darline Charbonneau  
People for People  
[www.diversity@yvhra.org](mailto:www.diversity@yvhra.org)

### Student & Workforce

**Readiness Chair**  
Chris Brese  
Tree Top  
[www.workforcereadiness@yvhra.org](mailto:www.workforcereadiness@yvhra.org)

### Member-At-Large

Joe Cozzetto  
Central Washington  
Occupational Medicine  
[www.memberatlarge@yvhra.org](mailto:www.memberatlarge@yvhra.org)



## RSVP for September Luncheon Meeting

Date: September 24, 2008

Time: 11:45 - 1:00

Place: Clarion Hotel, 1507 North First Street, Yakima

Cost: \$12 SHRM Member  
\$15 Non SHRM Member  
\$10 Student Member

RSVP on-line at [www.yvhra.org](http://www.yvhra.org) no later than Friday, September 19.

(If you are unable to register on-line, please click "contact us" for assistance.)

**Reminder: If you RSVP you are responsible for payment.**

**Save money by purchasing a 4-Pack Luncheon Punch Card.  
Cards can be purchased at the registration desk. (Must be a YVHRA member.)**